



FUNERAL HOME  
& CREMATION CENTRE

License 691



## Price List

Effective Date: March 15th, 2025

Family owned by  
Eric & Susanne Tappenden since 1999

Managing Funeral Director  
Alex Elder

**Website:** [www.chapelridgefh.com](http://www.chapelridgefh.com)

**Email:** [info@chapelridgefh.com](mailto:info@chapelridgefh.com)

**Phone:** 905-305-8508

**Fax:** 905-305-8128

**Address:** 8911 Woodbine Avenue,  
Markham, Ontario L3R 5G1

Licensed by the

**BAO** | Bereavement  
Authority of  
Ontario



# FUNERAL PACKAGES

This list of funeral service packages includes those most commonly selected by families.

The prices do not include caskets, burial vaults, cremation urns, or disbursements paid on your behalf.

For further explanation please feel free to ask your funeral director.

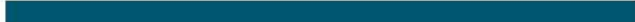
**All prices are subject to HST**

**\*Price Match Guarantee**

Chapel Ridge Funeral Home guarantees to match and better by 5% any written quote from any licensed funeral establishment in the Greater Toronto Area.

**OPTION 1. TRADITIONAL FUNERAL SERVICE  
WITH 3 HOUR VISITATION DAY PRIOR**

**OPTION 2. SAME DAY FUNERAL SERVICE  
WITH 1 HOUR VISITATION**



**Professional Staff & Services**

Professional Funeral Director	<b>\$1800</b>
Staff for Initial Transfer up to 40 km	<b>\$ 300</b>
Staff for Visitation	<b>\$ 400</b>
Staff for Service	<b>\$ 700</b>
Documentation	<b>\$ 180</b>
Embalming	<b>\$ 540</b>

**Vehicles**

Transfer Van from place of passing	<b>\$ 300</b>
Funeral Coach	<b>\$ 400</b>
Administration/Lead Vehicle	<b>\$ 200</b>

**Facilities & Equipment**

Facilities/Equipment for Ceremony	<b>\$ 820</b>
Facilities/Equipment for Visitation	<b>\$ 450</b>
Facilities for Care of Deceased	<b>\$ 255</b>

**Package Savings** **-\$ 250**

**Total:** **\$6095**

**Professional Staff & Services**

Professional Funeral Director	<b>\$1800</b>
Staff for Initial Transfer up to 40 km	<b>\$ 300</b>
Staff for Visitation (Hour Prior)	<b>\$ 150</b>
Staff for Service	<b>\$ 700</b>
Documentation	<b>\$ 180</b>
Embalming	<b>\$ 540</b>

**Vehicles**

Transfer Van from place of passing	<b>\$ 300</b>
Funeral Coach	<b>\$ 400</b>
Administration/Lead Vehicle	<b>\$ 200</b>

**Facilities & Equipment** Facilities/

Equipment for Ceremony	<b>\$ 820</b>
Facilities/Equipment for Visitation	<b>INCL.</b>
Facilities for Care of Deceased	<b>\$ 255</b>

**Package Savings** **-\$ 150**

**Total:** **\$5495**

*\*There is no additional charge for services held off-site.  
Off-site services require higher staff costs.  
On-site services require higher facility costs.*

**OPTION 3. CELEBRATION OF LIFE  
OR MEMORIAL SERVICE**

**Professional Staff & Services**

Professional Funeral Director	<b>\$1800</b>
Staff for Initial Transfer up to 40 km	<b>\$ 300</b>
Staff for Visitation	<b>\$ 150</b>
Staff for Service	<b>\$ 700</b>
Documentation	<b>\$ 180</b>
Alternate Care	<b>\$ 300</b>

**Vehicles**

Transfer Van from place of passing	<b>\$ 300</b>
Transfer Van to Crematorium	<b>\$ 250</b>
Administration/Lead Vehicle	<b>\$ 200</b>

**Facilities & Equipment**

Facilities/Equipment for Ceremony	<b>\$ 820</b>
Facilities/Equipment for Visitation	<b>\$ INCL.</b>
Facilities for Care of Deceased	<b>\$ 255</b>

**Package Savings** **-\$ 60**

**Total:** **\$5195**

**OPTION 4. SENSIBLE CHOICE  
CREMATION PACKAGE**

**Professional Staff & Services**

Professional Funeral Director	<b>\$1300</b>
Staff for Initial Transfer up to 40 km	<b>\$ 300</b>
Staff for Visitation	<b>N/A</b>
Staff for Service	<b>N/A</b>
Documentation	<b>\$ 180</b>
Alternate Care	<b>\$ 300</b>

**Vehicles**

Transfer Van from place of passing	<b>\$ 300</b>
Transfer Van to Crematorium	<b>\$ 250</b>
Administration/Lead Vehicle	<b>\$ 200</b>

**Facilities & Equipment**

Facilities/Equipment for Ceremony	<b>N/A</b>
Facilities for Care of Deceased	<b>\$ 255</b>

**Package Savings** **-\$ 295**

**Total:** **\$2790**

\*Cemetery & Cremation fees are not included

**OPTION 5. GRAVESIDE OR CREMATION  
WITNESSING SERVICE**

**Professional Staff & Services**

Professional Funeral Director	<b>\$1550</b>
Staff for Initial Transfer up to 40 km	<b>\$ 300</b>
Staff for Visitation	<b>N/A</b>
Staff for Service	<b>\$ 700</b>
Documentation	<b>\$ 180</b>
Alternate Care	<b>\$ 300</b>

**Vehicles**

Transfer Van from place of passing	<b>\$ 300</b>
Funeral Coach	<b>\$ 400</b>
Administration/Lead Vehicle	<b>\$ 150</b>

**Facilities & Equipment**

Facilities/Equipment for Ceremony	<b>N/A</b>
Facilities/Equipment for Visitation	<b>30 Mins Incl.</b>
Facilities for Care of Deceased	<b>\$ 255</b>

**Package Savings** **-\$ 140**

**Total:** **\$3995**

**OPTION 6. SHIPPING OUT  
TO ANOTHER COUNTRY**

**Professional Staff & Services**

Professional Funeral Director	<b>\$2000</b>
Staff for Initial Transfer up to 40 km	<b>\$ 300</b>
Staff for Visitation	<b>N/A</b>
Staff for Service	<b>N/A</b>
Documentation	<b>\$ 275</b>
Embalming	<b>\$ 540</b>

**Vehicles**

Transfer Van from place of passing	<b>\$ 350</b>
Transfer Van to Airport	<b>\$ 250</b>
Administration/Lead Vehicle	<b>\$ 150</b>

**Facilities & Equipment**

Facilities/Equipment for Ceremony	<b>N/A</b>
Facilities/Equipment for Visitation	<b>30 Mins Incl.</b>
Facilities for Care of Deceased	<b>\$ 255</b>

**Package Savings** **-\$ 175**

**Total:** **\$3995**

## OPTIONAL SERVICES & MERCHANDISE

---

<b>Professional Pallbearers or Additional Staff Services per 3 hours</b>	_____	<b>\$ 175</b>
<b>Staff Attendance for Interment of Cremated Remains</b>	_____	<b>\$ 495</b>
<b>Private Family ID time</b>	_____	<b>\$ 500</b>
<b>Extra Day of Visitation</b> (Option 1, 2, or 3 Add-On)	_____	<b>\$ 800</b>
<b>Reception Rooms</b>		
Richmond Room for 2 hrs. plus optional catering costs	_____	<b>\$1000</b>
Unionville Room for 2 hrs. plus optional catering costs	_____	<b>\$1500</b>
<b>Catering</b>	_____	<b>Starting at \$17/ person</b>
<b>7 Passenger Limousine</b> (3 Hours + \$150 per half hour)	_____	<b>\$ 450</b>
<b>9 Passenger Limousine</b> (3 Hours + \$150 per half hour)	_____	<b>\$ 500</b>
<b>Flowers</b>	_____	<b>Starting at \$300</b>
<b>Flower Van</b> (2 Hours)	_____	<b>\$ 300</b>
<b>On-Site Live Live Streaming:</b>	<b>Funeral Service \$100</b>	<b>Visitation and Funeral Service \$150</b>
<b>Professional Videography &amp; Live Streaming</b>	_____	<b>Starting at \$550</b>
<b>Embalming</b> (Options 3, 4 & 5 Add-On)	_____	<b>\$ 340</b>
<b>Religious Merchandise</b> (Cross, Crucifix, Rosary, Prayer Cards, Pallbearer Gloves)	___	<b>\$ 210</b>
<b>Removal of pacemaker</b>	_____	<b>\$ 195</b>
<b>Refundable deposit for unclaimed cremated remains</b>	_____	<b>\$ 350</b>
<b>Mileage Cost</b> (Outside of 40 km radius)	_____	<b>\$2.50 per km</b>
<b>Storage of Deceased</b> (After 5 days)	_____	<b>\$100 per day</b>
<b>Certified Death Registration Application Fee</b>	_____	<b>\$150</b>
<b>Police Escort 4 Hours 3 Police Cars and Officers</b>	(Can only escort 15 cars max)	<b>\$2300</b>

# STATIONERY TRIBUTES

---

## Orders of Service

11" x 8.5" folded, fully customized, colour, double-sided ..... \$ 150 per 50

## Memorial Folders

4.25" x 5.5" folded, fully customized, colour, double-sided ..... \$ 100 per 50

## Thank You Cards

Artist Thomas Kinkade Series cards with white envelopes ..... \$ 25 per 25

## Prayer Cards

Standard assorted religious style double sided cards ..... \$ 100 per 100

## Picture Prayer Cards

2.6" x 2.75" fully customized, colour, double-sided ..... \$ 200 per 100

## Premium Register Book

2.75" x 10" register book ..... \$ 50

## Customized Register Book

8.5" x 11" register book ..... \$ 125

## Memorial Framed Canvas Portrait

8" x 10" ..... \$ 175

10" x 15" ..... \$ 250



# DISBURSEMENTS

---

There are a number of services and fees, some of which are optional and some of which are necessary. Chapel Ridge will arrange and/or disburse on your behalf for no additional cost.

The following is a partial list.

## **Clergy and/or Musician Honoraria (At Cost)**

Most prefer that this be paid through the funeral home.

## **Weekend Vault Surcharge**

Saturday \$125.00 Sunday \$495.00

## **Cemetery or Crematorium Fees (At Cost)**

Cemetery opening/closing or cremation fees.

## **Newspaper Notices (At Cost)**

Staff can assist with the writing and placing of notices.

## **Government Fees (At Cost)**

Various government and regulatory fees.

## **Coroner's Cremation Fee (At Cost)**

As required

## **Coroner's Out of Province Fee (At Cost)**

As required

## **Airfare for Shipping (At Cost)**

As required

## **BAO Consumer Protection Fee (At Cost)**

The fee is charged by the Bereavement Authority of Ontario (BAO) in order to provide the consumer with information on the options within the bereavement sector and to regulate the profession making sure the law is consistently followed.

## PAYMENT POLICIES

---

For at time of need funerals **50%** of the total cost of the funeral service contract must be paid at the time of arrangements and full payment by the day of the funeral service.

No financing or time payments are provided for.

If payment is an issue, we suggest a bank line of credit or we can provide information regarding Social Services funeral options.

For prepaid funeral contracts, we offer payment terms through TruStage Life of Canada for insurance contracts or Guaranteed Funeral Deposits for trust contracts depending on the age of the client, term of payment and the cost of the plan.

To book a pre-arrangement consultation, please call one of our pre-need funeral director specialists at 905-305-8508.

Additional information pertaining to funding, payment and financing options is available upon request.

# CASKET SELECTION

All caskets listed are Adult Size

All wood caskets listed are  
suitable for cremation



## **710 PRESIDENT MAHOGANY**

SOLID DARK MAHOGANY  
SILVERBEIGE VELVET  
INTERIOR  
TIME HONORED  
CRAFTMANSHIP

**BATESVILLE # 202149**

**\$12,095**



## **THE PREMIER MAHOGANY**

ONE OF THE WORLD'S FINEST  
SOLID MAHOGANY CASKETS  
WITH A HIGH GLOSS FINISH  
AND CHAMPAGNE  
VELVET INTERIOR  
AVAILABLE IN FULL COUCH

**BATESVILLE #148244**

**\$11,980**



## THE PEMBROKE CHERRY

BEAUTIFULLY DESIGNED SOLID  
CHERRY SHELL DESIGN  
CHAMPAGNE VELVET INTERIOR  
HAND-RUBBED HIGH GLOSS  
FINISH WITH ACCENT BEADING  
MILANO PEARL  
VELVET INTERIOR  
AVAILABLE IN FULL COUCH

**BATESVILLE** #148227

**\$8,980**



## THE PARLIAMENT OAK

SOLID RED OAK  
WITH AN URN BODY SHELL  
PERSIAN FAWN HAND  
RUBBED GLOSS FINISH  
ELITE IVORY VELVET INTERIOR

**VICTORIAVILLE** # WR210-20848

**\$7,495**



## THE CROSS

SOLID MAHOGANY  
ROSETAN VELVET INTERIOR  
CARVED CROSS CORNERS

LEE & G # 702

**\$4,995**



## THE SACRAMENT

MAPLE SOLIDS AND  
ENGINEERED WOOD  
CONSTRUCTION WITH  
LAST SUPPER HANDLES  
INTERCHANGEABLE LIFE  
SYMBOL CORNERS  
CHAMPAGNE VELVET INTERIOR  
MEMORY SAFE DRAWER

BATESVILLE #205164

**\$5,195**



## THE MERLOT

18 GAUGE STEEL CASKET  
NEW LIFE STORIES  
MEDALLIONS  
MEMORY SAFE DRAWER  
CHAMPAGNE SIERRA INTERIOR

BATESVILLE #239694

**\$4,995**



## THE WOODFORD PECAN

PECAN SOLIDS AND  
ENGINEERED PECAN  
CONSTRUCTION  
INTERCHANGEABLE LIFE  
SYMBOL CORNERS  
LIFE STORIES MEDALLIONS  
CHAMPAGNE VELVET INTERIOR

BATESVILLE #242987

**\$4,480**



## THE ELEANOR OAK

SOLID OAK CASKET WITH A  
BURNISHED GOLDEN FINISH  
OCTAGON CORNERS  
PINK CREPE INTERIOR WITH A  
ROSE MOTIF

**BATESVILLE** #195908

**\$4,280**



## THE MUIRFIELD MAPLE

SOLID MAPLE CONSTRUCTION  
WOOD BAR HANDLES  
BRONZE METAL ACCENTS  
ROSETAN CREPE INTERIOR

**BATESVILLE** #195853

**\$4,380**





---

## THE HAMILTON

SOLID POPLAR  
POLISHED MAHOGANY FINISH  
ROSETAN VELVET INTERIOR

LEE & G # 101

**\$3,980**



---

## THE DOMINION

SOLID SILVER MAPLE  
RICH MAHOGANY TITIAN  
POLISH FINISH  
TAN CREPE INTERIOR  
WOOD BAR HANDLES

VICTORIAVILLE #20-5610-09

**\$4,880**



## THE HADYN

SOLID POPLAR  
WARM LIGHT WALNUT  
GLOSS FINISH  
WOOD BAR HANDLES  
ROSETAN CREPE INTERIOR  
INTERCHANGEABLE LIFE  
SYMBOL CORNERS

BATESVILLE #195866

**\$4,280**



## THE ROSETTE

PREMIUM POPLAR VENEERS  
ENGINEERED SOLIDS  
NATURAL EYELIT INTERIOR  
CHERRY HIGH GLOSS FINISH

AVAILABLE IN FULL COUCH  
# 242708

BATESVILLE # 242707

**\$4,280**





## THE RILEY

VENEER CONSTRUCTION  
DEEP RED FINISH  
LINWOOD CREPE INTERIOR  
WOOD BAR CARRIERS  
GOLD TONE ACCENTS

AVAILABLE IN FULL COUCH  
# 263784

**BATESVILLE # 263783**

**\$3,980**



## THE MONTGOMERY

SELECT WOODS  
GLOSS WALNUT FINISH  
WOOD BAR HANDLES  
GOLD ACCENTS  
INTERCHANGEABLE LIFE  
SYMBOL CORNERS

**BATESVILLE # 249223**

**\$3,680**





## THE GURNET

POPLAR WOOD  
POLISHED MAHOGANY FINISH  
ELEGANT BEIGE RAYON  
INTERIOR

AVAILABLE IN FULL COUCH  
# 217987

**BATESVILLE # 146825**

**\$3,480**



## THE CHESTNUT BROWN

SOLID POPLAR  
PURITAN STAIN  
ROSETAN CREPE INTERIOR  
WOOD CARRIERS WITH BRASS  
HARDWARE

AVAILABLE IN FULL COUCH  
#229306

**BATESVILLE #148244**

**\$3,480**



## THE OXFORD

SELECT WOODS  
WARM GOLDEN FINISH  
ROSETAN CREPE INTERIOR  
WOOD BAR CARRIERS  
GOLD TONE ACCENT  
HARDWARE

**BATESVILLE # 146824**

**\$2,990**



## THE DRYDEN BROWN

SELECT HARDWOODS  
AND VENEERS  
ROSETAN CREPE INTERIOR  
INTERCHANGEABLE LIFE  
SYMBOL CORNERS

AVAILABLE IN FULL COUCH  
#284451

**BATESVILLE: #278271**

**\$2,980**





## THE DRYDEN

SELECT HARDWOODS AND  
VENEER CONSTRUCTION  
ROSETAN CREPE INTERIOR  
CHERRY STAIN FINISH  
OPTIONAL LIFE SYMBOL  
CORNERS

**BATESVILLE** #274158

**\$2,980**



## THE DOMINION CEREMONIAL

(RENTAL CASKET FOR CREMATION ONLY)

SOLID SILVER MAPLE  
MAHOGANY TITIAN FINISH  
TAN CREPE INTERIOR  
WOOD BAR HANDLES  
INCLUDES PINE INTERIOR &  
INTERIOR

**VICTORIAVILLE** # WL220-00007

**\$2,190**





## THE GREY DOESKIN

EMBOSSED VICUNA CLOTH  
COVERED PARTICLE BOARD  
WITH SWELL TOP  
WHITE CREPE INTERIOR  
METAL BAR HANDLES

**BATESVILLE** # 147970

**\$1,690**



## THE EDEN ENVIRO

UNFINISHED POPLAR  
COTTON WEAVE HANDLES  
WHITE CREPE LINING

**NORTHERN** # 102

**\$1,190**

## Cremation Only Containers

---



### **CHAISE VIEWER & INSERT**

---

CUSTOM HARDWOOD EXTERIOR  
WOOD BAR HANDLES  
CREMATION INSERT  
INCLUDES 1/2 HOUR  
PRIVATE FAMILY VIEWING  
**NORTHERN # SM900**

**\$675**



### **PARTICLEBOARD CREMATION CONTAINER**

---

PARTICLE BOARD CONSTRUCTION  
ROPE HANDLES, NO INTERIOR  
SUITABLE FOR  
IMMEDIATE CREMATION  
**NORTHERN # 10**

**\$590**



### **LAKEVIEW CREMATION TRAY**

---

PARTICLE BOARD CREMATION  
CONTAINER BASE  
CARDBOARD LID  
FABRIC STRAP HANDLES  
FOR IMMEDIATE  
CREMATION ONLY  
**LAKEVIEW # 1**

**\$450**



# URN SELECTION

All urns listed are Adult Size

Ⓔ Indicates personalized engraving is available

## Bronze and Sheet Metal Urns

### The Aristocrat

Batesville: 100199  
 H 11"  
 L 7.75"  
 W 7.75"  
 -Solid bronze  
 -Limited to text only



**\$1,795** (E)

### Bronze Horizontal

Batesville: 100199  
 H 6.06"  
 L 7"  
 W 6.69"  
 -Sheet Bronze  
 -Life Symbol



**\$795** (E)

### The Milan

Batesville: 100059  
 H 10.25"  
 L 6.13"  
 W 6.13"  
 -Solid bronze



**\$1,295** (E)

### Pewter Bronze Vertical

Batesville: 235556  
 H 9.06"  
 L 8.50"  
 W 4.44"  
 -Sheet Bronze  
 -Life Symbol



**\$795** (E)

### Bronze Vertical

Batesville: 235554  
 H 9.06"  
 L 8.50"  
 W 4.44"  
 -64 oz Sheet Bronze  
 -Life Symbol Accent



**\$795** (E)

### Pewter Bronze Horizontal

Batesville: 100199  
 H 6.06"  
 L 7"  
 W 6.69"  
 -Sheet Bronze  
 -Life Symbol



**\$795** (E)

## Metal Urns

### Delphia Wings

Batesville: 235716  
 H 9.75"  
 L 6.69"  
 W 6.69"  
 -Cast in Brass



**\$595** (E)

### Returning Home

Commemorate:  
 A501  
 H 10"  
 D 6.25"  
 -Cast in Brass



**\$550**

### Flying Doves

Commemorate:  
 A572  
 H 9.5"  
 D 7"  
 -Cast in Aluminum



**\$450**

### Royal Plum

Batesville: 282818  
 H 11"  
 D 7"  
 -Cast in Metal Alloy



**\$550** (E)

### Starlight Pearl

Batesville: 282828  
 H 9"  
 D 6.5"  
 -Cast in Brass



**\$495**

### Ashen Pewter

Batesville: 205396  
 H 9.75"  
 L 6.88"  
 W 6.88"  
 -Cast in Brass



**\$450** (E)

## Cloisonne Urns

### Larkspur

Wilbert:  
PW28000212-C  
H 9"  
D 8"  
-Cast in Copper



**\$795**

### Blue Cloisonne

Wilbert:  
Pw28000212-C  
H 9"  
D 8"  
-Cast in Copper



**\$795**

### Cameo Rose

Wilbert:  
P2010-C  
H 9"  
D 8"  
-Cast in Copper



**\$795**

### Lilac Cloisonne

Wilbert:  
Pw28000211  
H 9"  
D 8"  
-Cast in Copper



**\$795**

### Autumn Leaves

Wilbert:  
P2009-C  
H 11"  
D 7"  
-Cast in Copper



**\$795**

### Red Rosette

Batesville: 270113  
H 10.25"  
L 6.13"  
W 6.13"  
-Cast in Copper



**\$795**

## Unique Urns

### Walker

Batesville: 264754  
H 6"  
L 11"  
W 11"  
-Select Hardwood  
-LifeSymbol  
or Display Medallions available



**\$995** (E)

### Bennington

Batesville:  
272045  
H 6.5"  
L 6.5"  
W 9.13"  
-Distressed Wood



**\$595** (E)

### Nantucket

Batesville:  
282769  
H 11.5"  
L 7.75"  
W 6"  
-Select Hardwoods



**\$795** (E)

### Oak Mantel Clock

Batesville: 232364  
H 12"  
L 7.5"  
W 10.25"  
-Solid Oak



**\$1,295** (E)

### Whittaker

Batesville  
255708  
H 5"  
D 8"  
W 10.75"  
-Maple Solids  
-LifeSymbol or  
Display Medallion available



**\$695** (E)

### Versatile Urn

Begin Urns VC  
H 8.5"  
W 4.75"  
L 7"  
-Custom aluminum



**\$595** (E)

## Marble Urns

### White Pearl

Sentiments:  
1104  
H 10.5"  
D 8"  
-White marble  
-Soft grey accents



**\$595**

### Green Marble

Sun Li  
017  
H 8.4  
D 6.5"  
-Green jade  
coloured marble



**\$495**

### Onyx Green

Sentiments:  
1113  
H 10.5"  
D 8"  
-Green marble  
-Mixed colours



**\$595**

### White Marble

Lee & G  
094  
H 8.4"  
D 6.5"  
-White marble



**\$495**

### Cloud Grey

Sentiments:  
1106  
H 10.5"  
D 8"  
-White marble  
-Mixed grey colours



**\$595**

### Navy Marble

Batesville: 238320  
H 6.38"  
L 6.75"  
W 9.69"  
-Blue marble



**\$495** (E)

## Wood Urns

### Fredricksburg

Batesville: 100107  
H 9.5"  
L 8.75"  
W 8.75"  
-Solid Cherry



**\$1,395** (E)

### Walnut Memento

Batesville: 148351  
H 6"  
W 10.38"  
L 8.13"  
-Solid Walnut



**\$695** (E)

### Solaris

Batesville: 272094  
H 10.25"  
L 6.13"  
W 6.13"  
-Select Hardwood



**\$695** (E)

### Wolton Distressed

Batesville: 270049  
H 6"  
w 8"  
L 11"  
-Distressed engineered  
wood construction



**\$550** (E)

### Bradbury

Batesville: 208692  
H 8.5"  
W 11.44"  
L 10.63"  
-Solid Pecan  
-Life Symbol



**\$495** (E)

### Braxton Maple

Batesville: 255706  
H 6.70"  
W 9.25"  
L 6.88"  
-Engineered  
wood construction



**\$295** (E)

## Wood Urns

### Classic Jewel Box Mahogany

Victoriaville:  
US101-00233  
W 11"  
L 8"  
H 5.5"  
-Solid Mahogany



**\$595** (E)

### Raised Panel

NorthUrn:  
NU209C  
H 7"  
L 11.6"  
W 7"  
-Maple stained poplar



**\$495** (E)

### Classic Jewel Box Oak

Victoriaville:  
US110-00253  
W 11"  
L 8"  
H 5.5"  
-Solid Oak



**\$595** (E)

### Standard Plain

NorthUrn:  
NU201  
H 9"  
L 6.5"  
W 6.5"  
-Poplar construction



**\$295** (E)

### Circle of Life

NorthUrn:  
NU211  
H 6.5"  
L 10"  
W 6"  
-Cherry stained poplar



**\$450** (E)

### Ember Urn

NorthUrn:  
NU201E  
H 9"  
L 6.5"  
W 6.5"  
-Poplar construction



**\$295** (E)

## Enviro Urns

### Butterfly Reflections

Batesville: 252359  
H 5"  
L 9"  
W 6"  
-Pressed cotton



**\$295**

### Spiritual Reflections

Batesville:  
240070  
H 4.5"  
W 21.25"  
L 21.25"  
-Pressed cotton



**\$625**

### Spiritual Reflections

Batesville:  
240070  
H 4.5"  
W 21.25"  
L 21.25"  
-Pressed cotton



**\$625**

### Scattering Tubes \$150

Passages International

H 12.6" x D 5" Cardboard



19<sup>th</sup> Hole  
PI-NH



Sunflowers  
PI-SF



Rainbow Pond  
PI-RP



Ocean Sunset  
PI-OS

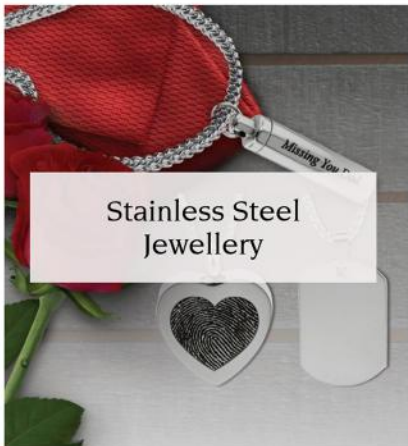


Bluebell  
PI-BF



Dove  
PI-ADM

# loved remembered™



**Full product line and pricing**



**[www.lovedremembered.com](http://www.lovedremembered.com)**

# **VAULT SELECTION**

## MONTICELLO

2,000 LBS  
50 YEAR WARRANTY  
SINGLE-REINFORCED VAULT  
CONCRETE EXTERIOR  
PLASTIC-REINFORCED  
COVER AND BASE  
NAME PLATE, DATES, &  
EMBLEM INCLUDED

WILBERT # WM30

**\$1,890**



## VENETIAN

2,600 LBS  
65 YEAR WARRANTY  
HIGH STRENGTH  
CONCRETE EXTERIOR  
PLASTIC-REINFORCED  
COVER AND BASE  
PERSONALIZATION CHOICES  
AVAILABLE

WILBERT # WV30

**\$2,530**





## CAMEO ROSE

3,000 LBS  
75 YEAR WARRANTY  
MID-LINE VAULT  
DOUBLE REINFORCED UNIT  
STAINLESS STEEL COVER  
AND INTERIOR  
PERSONALIZATION CHOICES  
AVAILABLE

WILBERT # CR30

**\$3,620**



## STAINLESS STEEL TRIUNE

3,000 LBS  
75 YEAR WARRANTY  
HIGH STRENGTH  
CONCRETE EXTERIOR  
PLASTIC-REINFORCED  
COVER AND BASE  
PERSONALIZATION CHOICES  
AVAILABLE

WILBERT # SST30

**\$3,620**



## BRONZE TRIUNE

3,000 LBS  
75 YEAR WARRANTY  
DOUBLE REINFORCED VAULT  
HIGH STRENGTH CONCRETE  
COVER AND BASE  
REINFORCED WITH  
NON-RUSTING BRONZE  
BRONZE ACCENTS

WILBERT # BT30

**\$4,580**



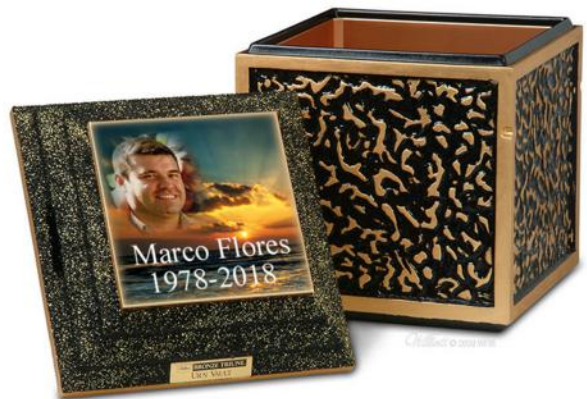
## BRONZE TRIUNE URN VAULT

75 YEAR WARRANTY  
DOUBLE REINFORCED VAULT  
HIGH STRENGTH CONCRETE  
COVER AND BASE  
REINFORCED WITH  
NON-RUSTING BRONZE  
BRONZE ACCENTS

WILBERT # N600BP

**\$2,195**

\*Other Urn Vaults Available  
Ask your Funeral Director or  
Pre-Planner for further information



## **Glossary of Terms & Definitions**

### **Professional Funeral Director**

Professional consultation with a licensed funeral director, which may include but is not limited to expert advice with regard to options to meet your needs, including essential services relating to the preparation of the remains of your loved one, interment, cremation or shipment, drafting newspaper notices, planning and scheduling of visitations, services, dispositions, receptions and filing necessary government documentation (cancellation of SIN #, CPP death or survivor benefits if any)

### **Other Staff Services for Visitation/Services/Receptions**

Includes but is not limited to the staff overseeing visitations, services, receptions, parking, general duties, secretarial and janitorial duties. Each staff member is here to serve your family with personal care and excellence.

### **Staff for Initial Transfer**

Staff required for transportation of your loved one from the place of passing into our care at the funeral home. These staff members are on call 24/7 and can be dispatched at a moment's notice.

### **Documentation**

Completion and filing of any and all documents necessary to carry out the services and supplies requested, including, but not limited to the death registration, burial permit, coroner's cremation or ship out certificate, etc. We also provide an unlimited number of Proof of Death Certificates and assist with any government benefits available.

### **Embalming**

Embalming is the process of sanitation, restoration and temporary preservation. Embalming is not legally required but is recommended to preserve your loved one between the time of passing and the services requested. This fee also includes bathing, dressing, casketing, hair styling, makeup and any restoration required.

### **Alternate Care**

When embalming is not chosen, we bathe and dress your loved one prior to casketing.

### **Transfer Vehicle**

The transfer vehicle is an unmarked vehicle which is used for the initial transportation from the place of passing into our care at the funeral home.

### **Funeral Coach**

The funeral coach (Hearse) is the vehicle used for transportation of your Loved one and the selected casket to the place of visitation, service, and disposition location.

### **Administration/Lead Vehicle**

This vehicle is used for any and all registration of necessary documentation at a variety of locations across the GTA, leading the funeral procession, transportation of clergy, retrieval of cremated remains from crematoriums, it can also be used for transportation of up to 4 family members.

### **Facilities for Ceremony**

Designated facilities at our Funeral Home used for the ceremony or memorial service. Also includes any AV equipment available or requested.

### **Preparation Facility & Equipment**

Designated facilities at our Funeral Home for the required preparations and storage. Including; Embalming, bathing, dressing, casketing and refrigeration.

### **Facilities for Visitation**

Designated facilities at our Funeral Home for the visitation. Also includes any AV equipment available or requested.



## Contact Us Today!

Proudly Serving the Communities of Markham, Stouffville, Richmond Hill, Thornhill, Scarborough, York Region, Durham Region, GTA.

✉ [info@chapelridgefh.com](mailto:info@chapelridgefh.com)

☎ (905) 305-8508

📍 8911 Woodbine Avenue Markham, ON L3R 5G1

